

LMZC6、7、8-10

电流互感器 CURRENT TRANSFORMER

OBC®

环网柜、充气柜用互感器

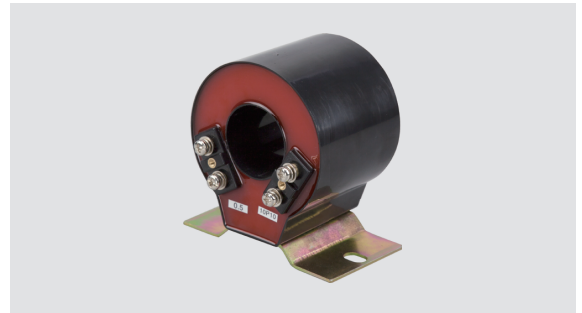
6-35kV 户内电流互感器

户内 单相 环氧树脂浇注式

INDOOR SINGLE-PHASE EPOXY RESIN CASTING TYPE

技术参数 Technical data

○ Rated ratio, Accuracy class and Rated burden are shown in the table below. Rated secondary current 5A or 1A.



型号 Type	用途 Purpose 额定一次电流 (A) Rated primary current	双绕组电流互感器 Double winding Current transformer 准备级及额定输出 (VA) COS φ=0.8 Accuracy class and rated output					
		0.2S	0.2	0.5	10P15	10P10	10P5
		LMZC6-1DCP	75			2.5	
	100	2.5	3.75	5	1.5	2.5	5
	150	5	5	5	1.5	3.75	7.5
	200	5	5	5	2.5	5	10
	300	10	10	10	5	7.5	15
	400	10	10	10	7.5	10	20
	500	15	15	15	7.5	10	25
	600	20	20	20	7.5	10	25
LMC7-1DCP	75			2.5			2.5
	100	2.5	3.75	5	1.5	2.5	5
	150	5	5	5	1.5	3.75	7.5
	200	5	5	5	2.5	5	10
	300	10	10	10	5	7.5	15
	400	10	10	10	7.5	10	20
	500	15	15	15	7.5	10	25
	600	20	20	20	7.5	10	25
LMZC8-1DCP	75			2.5			2.5
	100	2.5	3.75	5	1.5	2.5	5
	150	5	5	5	1.5	3.75	7.5
	200	5	5	5	2.5	5	10
	300	10	10	10	5	7.5	15
	400	10	10	10	7.5	10	20
	500	15	15	15	7.5	10	25
	600	20	20	20	7.5	10	25

外形及安装尺寸 Overall dimension drawing

